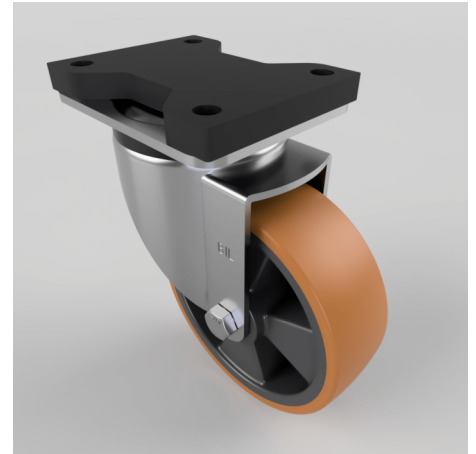


Brown Polyurethane Swivel Plate Castor 150mm 600kg

Product code: BZSPH150XPNBJFP

Pressed steel swivel castor with a top plate fixing fitted with a brown polyurethane tyre black nylon centred wheel with ball bearings. Wheel diameter 150mm, tread width 50mm, overall height 204mm, top plate 135mm x 110mm, hole centres 105mm x 80mm. Load capacity 600kg at 4kph.



Fixing Option	Plate
Diameter (mm)	150
Load Capacity (kg)	600
Castor Type	Swivel
Height (mm)	204
Wheel Material	Polyurethane on Nylon
Colour / Shore Hardness	Brown Polyurethane on Nylon Rim / 96 Shore A
Bearing Type	Ball
Tread (mm)	50
Fork Thickness (mm)	5
Temperature Resistance	-20 °C TO +60 °C
Plate Size (mm)	135 x 110
Hole Centres (mm)	105 x 80
Swivel Radius (mm)	128
Top Plate Thickness (mm)	19
To Suit Fixing Bolt (mm)	10

BIL GROUP LTD

Porte Marsh Road, Calne, Wiltshire, SN11 9BW

Registered in England No: 2603821

VAT Reg: GB572705729

