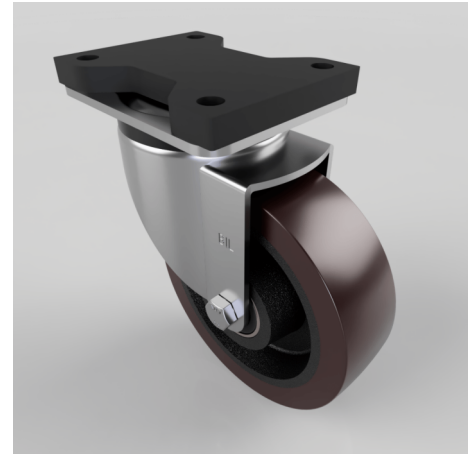


## Brown Polyurethane Swivel Plate Castor 160mm 700kg

**Product code: BZSPH160PTBJFP**

Pressed steel swivel castor with a top plate fixing fitted with a brown 94 shore A polyurethane tyre cast iron centred wheel with ball bearings. Wheel diameter 160mm, tread width 50mm, overall height 204mm, top plate 135mm x 110mm, hole centres 105mm x 80mm. Load capacity 700kg at 4kph.



Fixing Option	Plate
Diameter (mm)	160
Load Capacity (kg)	700
Castor Type	Swivel
Height (mm)	209
Wheel Material	Polyurethane on Cast Iron
Colour / Shore Hardness	Brown Polyurethane on Cast Iron Rim / 94 Shore A
Bearing Type	Ball
Tread (mm)	50
Fork Thickness (mm)	5
Temperature Resistance	-20 °C TO +80 °C
Plate Size (mm)	135 x 110
Hole Centres (mm)	105 x 80
Swivel Radius (mm)	133
Top Plate Thickness (mm)	19
To Suit Fixing Bolt (mm)	10