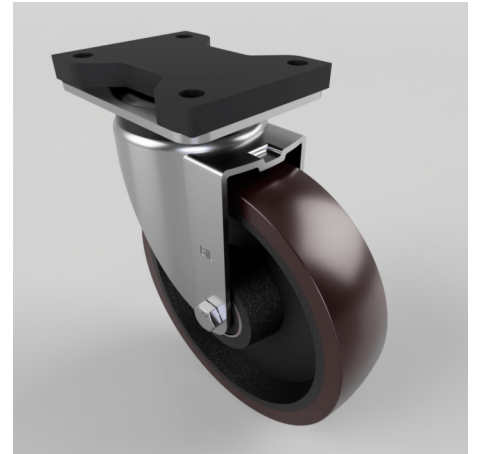


Brown Polyurethane Swivel Plate Castor 200mm 700kg

Product code: BZSPH200PTBJFP

Pressed steel swivel castor with a top plate fixing fitted with a brown polyurethane tyred cast iron centre wheel with ball bearings. Wheel diameter 200mm, tread width 57mm, overall height 252mm, top plate 135mm x 110mm, hole centres 105mm x 80mm and a Load capacity of 700kg.



Fixing Option	Plate
Diameter (mm)	200
Load Capacity (kg)	700
Castor Type	Swivel
Height (mm)	252
Wheel Material	Polyurethane on Cast Iron
Colour / Shore Hardness	Brown Polyurethane on Cast Iron Rim / 94 Shore A
Bearing Type	Ball
Tread (mm)	50
Fork Thickness (mm)	5
Temperature Resistance	-20 °C TO +80 °C
Plate Size (mm)	135 x 110
Hole Centres (mm)	105 x 80
Swivel Radius (mm)	153
Top Plate Thickness (mm)	19
To Suit Fixing Bolt (mm)	10

BIL GROUP LTD

Porte Marsh Road, Calne, Wiltshire, SN11 9BW

Registered in England No: 2603821

VAT Reg: GB572705729

