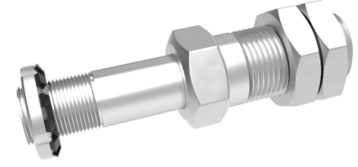


Cantilevered Steel Axle Mounting Diameter 20mm 350kg Load

Product code: CLA20



POA Cantilevered / stub axle assembly, to suit axle diameter 20mm, total length 119mm, minimum axle hub length 35mm, maximum axle hub length 45mm, Hex nut width 15mm, fixing length 50mm, thread diameter M27, Hex nut diameter 32 A/F, Load capacity 350kg. Recommended minimum mounting plate thickness 12mm. ****MANUFACTURED TO ORDER****

To suit axle diameter (mm)	20
Total length (mm)	119
Minimum Axle Hub Length (mm)	35
Maximum Axle Hub Length (mm)	45
Hex Nut Width (mm)	15
Fixing Length (mm)	50
Thread Diameter (mm)	M27
Hex Nut Diameter (A/F)	32
Load Capacity (kg)	350

BIL GROUP LTD

Porte Marsh Road, Calne, Wiltshire, SN11 9BW

Registered in England No: 2603821

VAT Reg: GB572705729

