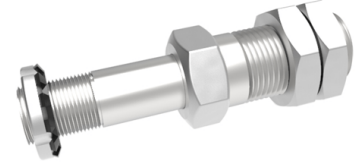


Cantilevered Steel Axle Mounting Diameter 25mm 600kg Load

Product code: CLA25



POA Cantilevered / stub axle assembly, to suit axle diameter 25mm, total length 137mm, minimum axle hub length 40mm, maximum axle hub length 52mm, Hex nut width 15mm, fixing length 60mm, thread diameter M30, Hex nut diameter 36 A/F, Load capacity 600kg. Recommended minimum mounting plate thickness 16mm. ****MANUFACTURED TO ORDER****

To suit axle diameter (mm)	25
Total length (mm)	137
Minimum Axle Hub Length (mm)	40
Maximum Axle Hub Length (mm)	52
Hex Nut Width (mm)	15
Fixing Length (mm)	60
Thread Diameter (mm)	M30
Hex Nut Diameter (A/F)	36
Load Capacity (kg)	600

BIL GROUP LTD

Porte Marsh Road, Calne, Wiltshire, SN11 9BW

Registered in England No: 2603821

VAT Reg: GB572705729

