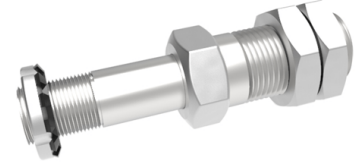


Cantilevered Steel Axle Mounting Diameter 30mm 825kg Load

Product code: CLA30



POA Cantilevered / stub axle assembly, to suit axle diameter 30mm, total length 170mm, minimum axle hub length 50mm, maximum axle hub length 65mm, Hex nut width 20mm, fixing length 75mm, thread diameter M36, Hex nut diameter 46 A/F, Load capacity 825kg. Recommended minimum mounting plate thickness 18mm. ****MANUFACTURED TO ORDER****

To suit axle diameter (mm)	30
Total length (mm)	170
Minimum Axle Hub Length (mm)	50
Maximum Axle Hub Length (mm)	65
Hex Nut Width (mm)	20
Fixing Length (mm)	75
Thread Diameter (mm)	M36
Hex Nut Diameter (A/F)	46
Load Capacity (kg)	825

BIL GROUP LTD

Porte Marsh Road, Calne, Wiltshire, SN11 9BW

Registered in England No: 2603821

VAT Reg: GB572705729

