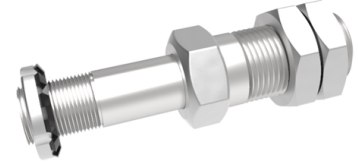


Cantilevered Steel Axle Mounting Diameter 35mm 1100kg Load

Product code: CLA35



POA Cantilevered / stub axle assembly, to suit axle diameter 35mm, total length 207mm, minimum axle hub length 60mm, maximum axle hub length 85mm, Hex nut width 20mm, fixing length 90mm, thread diameter M42, Hex nut diameter 50 A/F, Load capacity 1100kg. Recommended minimum mounting plate thickness 22mm. ****MANUFACTURED TO ORDER****

To suit axle diameter (mm)	35
Total length (mm)	207
Minimum Axle Hub Length (mm)	60
Maximum Axle Hub Length (mm)	85
Hex Nut Width (mm)	20
Fixing Length (mm)	90
Thread Diameter (mm)	M42
Hex Nut Diameter (A/F)	50
Load Capacity (kg)	1100

BIL GROUP LTD

Porte Marsh Road, Calne, Wiltshire, SN11 9BW

Registered in England No: 2603821

VAT Reg: GB572705729

