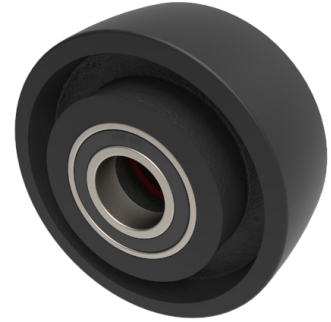


## Cast Iron 100mm Ball Bearing Wheel 350kg Load

**Product code: BZMH100WCIBJM254**



Cast Iron wheel with a ball bearing. Diameter 100mm, tread width 38mm, bore size 25.4mm, hub length 45mm. Load capacity 350kg.

Hub Width (mm)	45
Bore Size (mm)	25.4
Tread (mm)	38
Bearing Type	Ball
Load Capacity (kg)	350
Wheel Material	Cast Iron
Diameter (mm)	100
Colour / Shore Hardness	Black Painted Cast Iron
Temperature Resistance	-30 °C TO +80 °C

### BIL GROUP LTD

Porte Marsh Road, Calne, Wiltshire, SN11 9BW

Registered in England No: 2603821

VAT Reg: GB572705729

