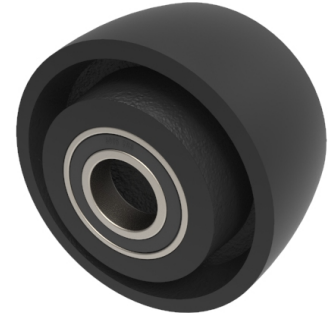


Cast Iron 100mm Ball Bearing Wheel 400kg Load

Product code: BZH100WCIBJM254



Cast Iron wheel with a ball bearing. Diameter 100mm, tread width 50mm, bore size 25.4mm, hub length 60mm. Load capacity 400kg.

Wheel Material	Cast Iron
Diameter (mm)	100
Load Capacity (kg)	400
Bearing Type	Ball
Bore Size (mm)	25.4
Tread (mm)	50
Hub Width (mm)	60
Colour / Shore Hardness	Black Painted Cast Iron
Temperature Resistance	-30 °C TO +80 °C

BIL GROUP LTD

Porte Marsh Road, Calne, Wiltshire, SN11 9BW

Registered in England No: 2603821

VAT Reg: GB572705729

