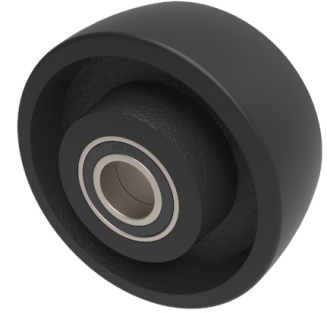


Cast Iron 125mm Ball Bearing Wheel 550kg Load

Product code: BZH125WCIBJM254



Cast iron wheel with ball bearings. Wheel diameter 125mm, tread width 50mm, bore size 25.4mm, hub length 60mm. Load capacity 550kg.

Wheel Material	Cast Iron
Diameter (mm)	125
Load Capacity (kg)	550
Bearing Type	Ball
Bore Size (mm)	25.4
Tread (mm)	50
Hub Width (mm)	60
Colour / Shore Hardness	Black Painted Cast Iron
Temperature Resistance	-30 °C TO +80 °C

BIL GROUP LTD

Porte Marsh Road, Calne, Wiltshire, SN11 9BW

Registered in England No: 2603821

VAT Reg: GB572705729

