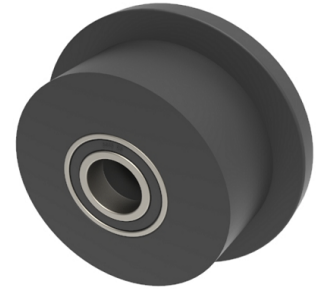


## Cast Iron Flanged 100mm Ball Bearing Wheel 800kg Load

**Product code: BZH100WCSFBJM25**



Flanged cast iron wheel with ball bearings. Wheel diameter 100mm, outer flange 125mm, tread width 38mm, bore size 25mm, hub length 50mm. tread ascent 3 degrees relative to the wheel axle with a Load capacity 800kg.

Wheel Material	Cast Iron Flanged
Diameter (mm)	100
Load Capacity (kg)	800
Bearing Type	Ball
Bore Size (mm)	25
Tread (mm)	38
Hub Width (mm)	50

### BIL GROUP LTD

Porte Marsh Road, Calne, Wiltshire, SN11 9BW

Registered in England No: 2603821

VAT Reg: GB572705729

