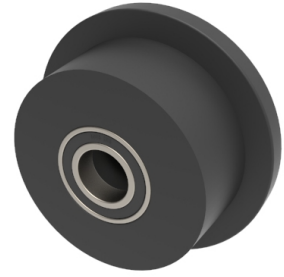


Cast Iron Flanged 100mm Ball Bearing Wheel 800kg Load

Product code: BZH100WCSFBJM254



Flanged cast iron wheel with ball bearings. Wheel diameter 100mm, outer flange 125mm, tread width 38mm, bore size 25.4mm, hub length 50mm. tread ascent 3 degrees relative to the wheel axle with a Load capacity 800kg.

Wheel Material	Cast Iron Flanged
Diameter (mm)	100
Load Capacity (kg)	800
Bearing Type	Ball
Bore Size (mm)	25.4
Tread (mm)	38
Hub Width (mm)	50

BIL GROUP LTD

Porte Marsh Road, Calne, Wiltshire, SN11 9BW

Registered in England No: 2603821

VAT Reg: GB572705729

