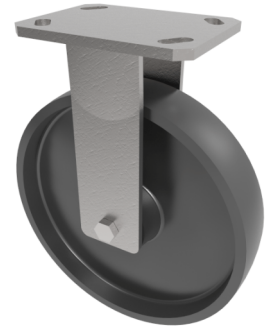


Cast Iron Plate Fixed Castor 100mm 400kg Load

Product code: BZKF100CI



Fabricated fixed castor with a top plate fixing fitted with a cast iron wheel with plain bores. Wheel diameter 100mm, tread width 50mm, overall height 150mm, top plate 150mm x 110mm, hole centres 105mm x 80mm or 121mm x 59mm. Load capacity 400kg.

Diameter (mm)	100
Fixing Option	Plate
Castor Type	Fixed
Bearing Type	Plain
Height (mm)	150
Plate Size (mm)	150 x 110
Hole Centres (mm)	105/121 x 80/59
To Suit Fixing Bolt (mm)	12
Wheel Material	Cast Iron
Colour / Shore Hardness	Black Painted Cast Iron
Temperature Resistance	-30 °C TO +80 °C
Top Plate Thickness (mm)	7.5
Fork Thickness (mm)	6
Load Capacity (kg)	400
Tread (mm)	50

BIL GROUP LTD

Porte Marsh Road, Calne, Wiltshire, SN11 9BW

Registered in England No: 2603821

VAT Reg: GB572705729

