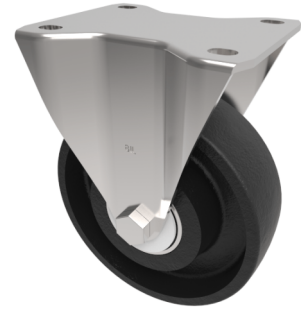


## Cast Iron Plate Fixed Castor 125mm 300kg Load

**Product code: BZEHF125CILP**



Pressed steel fixed castor with a top plate fixing fitted with a cast iron wheel and a plain bore. Wheel diameter 125mm, tread width 40mm, overall height 156mm, top plate 135mm x 110mm, hole centres 105mm x 80mm or 116mm x 92.5mm. Load capacity 300kg.

Diameter (mm)	125
Castor Type	Fixed
Fixing Option	Plate
Height (mm)	155
Wheel Material	Cast Iron
Colour / Shore Hardness	Black Painted Cast Iron
Temperature Resistance	-30 °C TO +80 °C
Bearing Type	Plain
Load Capacity (kg)	300
Tread (mm)	40
Plate Size (mm)	135 x 110
Hole Centres (mm)	105/116 x 80/64
Top Plate Thickness (mm)	3
Fork Thickness (mm)	3
To Suit Fixing Bolt (mm)	10

### BIL GROUP LTD

Porte Marsh Road, Calne, Wiltshire, SN11 9BW

Registered in England No: 2603821

VAT Reg: GB572705729

