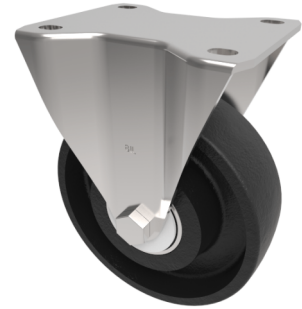


Cast Iron Plate Fixed Castor 125mm 300kg Load

Product code: BZEHF125CIBJLP



Pressed steel fixed castor with a top plate fixing with a cast iron wheel with ball bearings. Wheel diameter 125mm, tread width 38mm, overall height 155mm, top plate 105mm x 86mm, hole centres 116/105mm x 80/63.5mm. Load capacity 300kg. Max Temp 80c

Diameter (mm)	125
Castor Type	Fixed
Fixing Option	Plate
Height (mm)	155
Wheel Material	Cast Iron
Colour / Shore Hardness	Black Painted Cast Iron
Temperature Resistance	-30 °C TO +80 °C
Bearing Type	Ball
Load Capacity (kg)	300
Tread (mm)	40
Plate Size (mm)	135 x 110
Hole Centres (mm)	110 x 80
Top Plate Thickness (mm)	3
Fork Thickness (mm)	3
To Suit Fixing Bolt (mm)	10

BIL GROUP LTD

Porte Marsh Road, Calne, Wiltshire, SN11 9BW

Registered in England No: 2603821

VAT Reg: GB572705729

