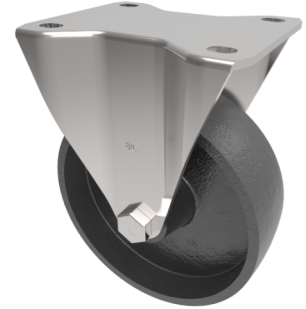


## Cast Iron Plate Fixed Castor 125mm 400kg Load

**Product code: BZHF125CI**



Pressed steel fixed castor with a top plate fitted with a cast iron wheel with a plain bore. Wheel diameter 125mm, tread width 40mm, overall height 155mm, top plate 105mm x 86mm, hole centres 80mm x 60mm. Load capacity 400kg.

Diameter (mm)	125
Castor Type	Fixed
Fixing Option	Plate
Height (mm)	155
Wheel Material	Cast Iron
Colour / Shore Hardness	Black Painted Cast Iron
Temperature Resistance	-30 °C TO +80 °C
Bearing Type	Plain
Load Capacity (kg)	400
Tread (mm)	40
Plate Size (mm)	105 x 86
Hole Centres (mm)	80 X 60
Top Plate Thickness (mm)	4
Fork Thickness (mm)	4
To Suit Fixing Bolt (mm)	8

### BIL GROUP LTD

Porte Marsh Road, Calne, Wiltshire, SN11 9BW

Registered in England No: 2603821

VAT Reg: GB572705729

