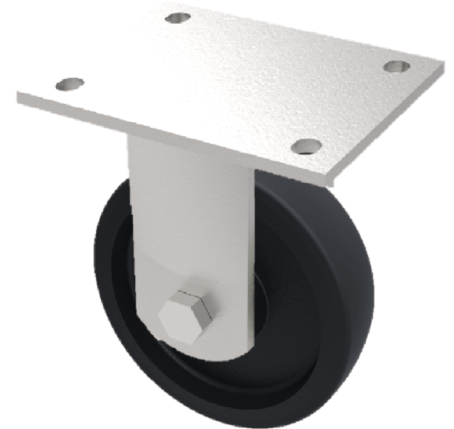


Cast Iron Plate Fixed Castor 125mm 400kg Load

Product code: BZJF125CI

Fabricated fixed castor with a top plate fixing fitted with a black painted cast iron wheel with plain bearing. Wheel diameter 125mm, tread width 50mm, overall height 165mm, top plate 135mm x 110mm. Load capacity 400kg.



Diameter (mm)	125
Fixing Option	Plate
Castor Type	Fixed
Bearing Type	Plain
Height (mm)	165
Plate Size (mm)	135 x 110
Hole Centres (mm)	105 x 80
To Suit Fixing Bolt (mm)	10
Wheel Material	Cast Iron
Colour / Shore Hardness	Black Painted Cast Iron
Temperature Resistance	-30 °C TO +80 °C
Top Plate Thickness (mm)	5.5
Fork Thickness (mm)	5.5
Load Capacity (kg)	400
Tread (mm)	50