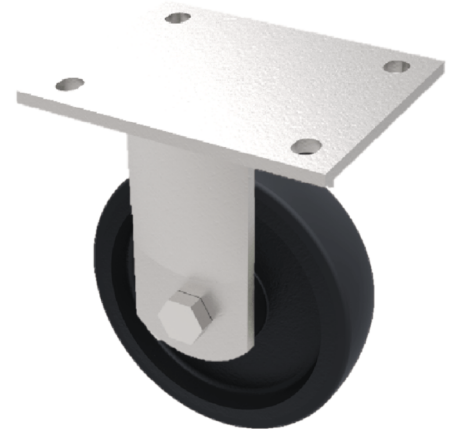


Cast Iron Plate Fixed Castor 125mm 550kg Load

Product code: BZKFL125CI

Fabricated fixed castor with a top plate fixing fitted with a cast iron wheel with plain bearing. Wheel diameter 125mm, tread width 50mm, overall height 165mm, top plate 138mm x 110mm, hole centres 105mm x 80/75mm. Load capacity 550kg.



Diameter (mm)	125
Fixing Option	Plate
Castor Type	Fixed
Bearing Type	Plain
Height (mm)	165
Plate Size (mm)	138 x 110
Hole Centres (mm)	105 x 80/75
To Suit Fixing Bolt (mm)	10
Wheel Material	Cast Iron
Colour / Shore Hardness	Black Painted Cast Iron
Temperature Resistance	-30 °C TO +80 °C
Top Plate Thickness (mm)	7.5
Fork Thickness (mm)	6
Load Capacity (kg)	550
Tread (mm)	50

BIL GROUP LTD

Porte Marsh Road, Calne, Wiltshire, SN11 9BW

Registered in England No: 2603821

VAT Reg: GB572705729

