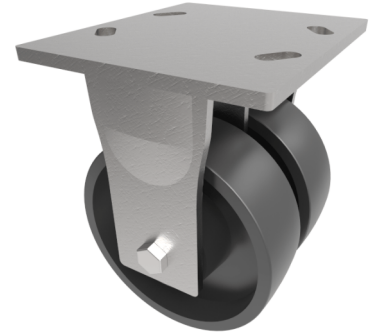


## Cast Iron Plate Fixed Castor 150mm 1500kg Load

**Product code: 2BZKF150CIBJ**



Twin-wheeled fabricated swivel castor with a top plate fixing fitted with 2 x solid cast iron wheels with ball journal bearings. Wheel diameter 150mm, tread width 50mm, overall height 200mm, top plate 175mm x 150mm, hole centers 105mm x 80mm or 121mm x 59mm. Load capacity 1500kg.

Diameter (mm)	150
Fixing Option	Plate
Castor Type	Fixed
Bearing Type	Ball
Plate Size (mm)	175 x 150
Hole Centres (mm)	105/121 x 80/59
Height (mm)	200
To Suit Fixing Bolt (mm)	12
Wheel Material	Cast Iron
Colour / Shore Hardness	Black Painted Cast Iron
Temperature Resistance	&quot;-30 °C TO +80 °C
Tread (mm)	2 x 50
Load Capacity (kg)	1500
Top Plate Thickness (mm)	7.5
Fork Thickness (mm)	6

### BIL GROUP LTD

Porte Marsh Road, Calne, Wiltshire, SN11 9BW

Registered in England No: 2603821

VAT Reg: GB572705729

