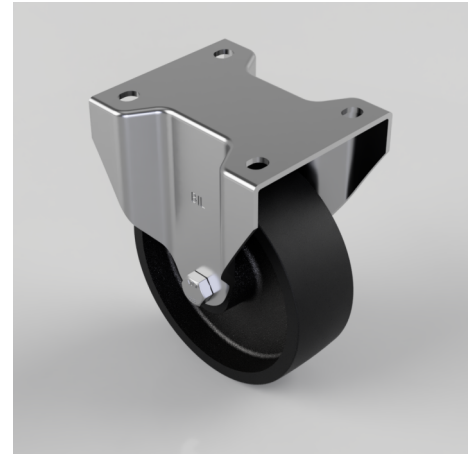


Cast Iron Plate Fixed Castor 150mm 500kg Load

Product code: BZPHF150CI

Pressed steel fixed castor with a top plate fixing fitted with a cast iron wheel with a plain bore. Wheel diameter 150mm, tread width 50mm, overall height 190mm, top plate 135mm x 115mm, hole centres 105mm x 80/75mmmm. Load capacity 500kg.



Diameter (mm)	150
Castor Type	Fixed
Fixing Option	Plate
Height (mm)	190
Wheel Material	Cast Iron
Colour / Shore Hardness	Black Painted Cast Iron
Temperature Resistance	-30 °C TO +80 °C
Bearing Type	Plain
Load Capacity (kg)	500
Tread (mm)	50
Plate Size (mm)	135 x 115
Hole Centres (mm)	105 x 80/75
Top Plate Thickness (mm)	3.5
Fork Thickness (mm)	3.5
To Suit Fixing Bolt (mm)	10