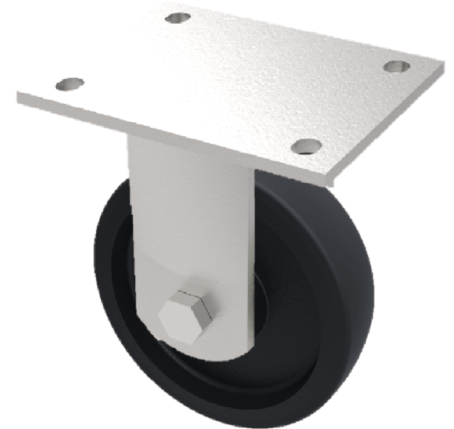


Cast Iron Plate Fixed Castor 150mm 500kg Load

Product code: BZEJF150CI

Fabricated fixed castor with top plate fixing fitted with a cast iron wheel with plain bore. Wheel diameter 150mm, tread width 50mm, overall height 190mm plate size 135mm x 110mm, hole centers 105mm x 80mm. Load capacity 500kg.



Diameter (mm)	150
Fixing Option	Plate
Castor Type	Fixed
Bearing Type	Plain
Height (mm)	190
Plate Size (mm)	135 x 110
Hole Centres (mm)	105 x 80
To Suit Fixing Bolt (mm)	12
Wheel Material	Cast Iron
Colour / Shore Hardness	Black Painted Cast Iron
Temperature Resistance	-30 °C TO +80 °C
Top Plate Thickness (mm)	5.5
Fork Thickness (mm)	5.5
Load Capacity (kg)	500
Tread (mm)	50