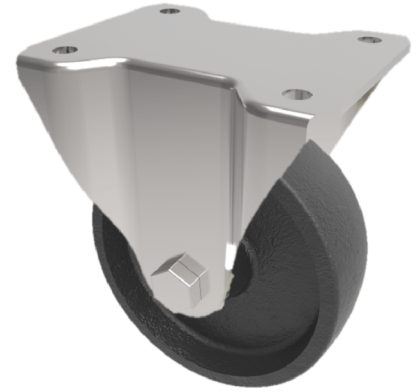


Cast Iron Plate Fixed Castor 150mm 700kg Load

Product code: BZSPHF150CIBJ/HT



Pressed steel fixed castor with a top plate fixing fitted with black cast iron wheel with ball bearing. Wheel diameter 150mm, tread width 50mm, overall height 190mm, top plate 135mm x 110mm, hole centres 105mm x 80/75mm. Load capacity 700kg at 200c Maximum tempertature,

Diameter (mm)	150
Fixing Option	Plate
Castor Type	Fixed
Plate Size (mm)	135 x 110
Hole Centres (mm)	105 x 80/75
To Suit Fixing Bolt (mm)	10
Height (mm)	190
Bearing Type	Ball
Wheel Material	Cast Iron
Colour / Shore Hardness	Black Painted Cast Iron
Temperature Resistance	-30°C to +200°C
Load Capacity (kg)	700
Tread (mm)	50
Top Plate Thickness (mm)	5
Fork Thickness (mm)	5

BIL GROUP LTD

Porte Marsh Road, Calne, Wiltshire, SN11 9BW

Registered in England No: 2603821

VAT Reg: GB572705729

