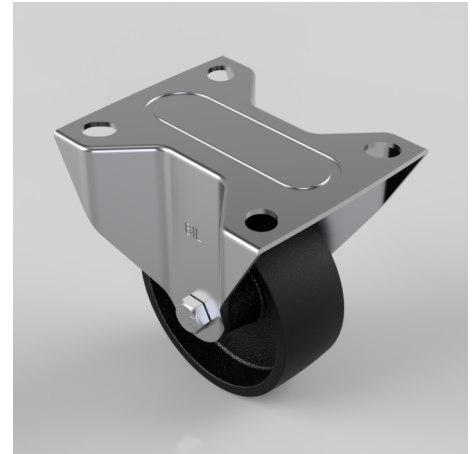


Cast Iron Plate Fixed Castor 80mm 130kg Load

Product code: BZMMF80CI

Pressed steel fixed castor with a top plate fixing fitted with a cast iron wheel with plain bore, Wheel diameter 80mm, tread width 32mm, overall height 105mm, top plate 105mm x 85mm, hole centres 80mm x 60mm. Load capacity 130kg.



Diameter (mm)	80
Castor Type	Fixed
Fixing Option	Plate
Height (mm)	105
Wheel Material	Cast Iron
Colour / Shore Hardness	Black Painted Cast Iron
Temperature Resistance	-30 °C TO +80 °C
Bearing Type	Plain
Load Capacity (kg)	130
Tread (mm)	32
Plate Size (mm)	105 X 85
Hole Centres (mm)	80 X 60
Top Plate Thickness (mm)	2
Fork Thickness (mm)	2
To Suit Fixing Bolt (mm)	8