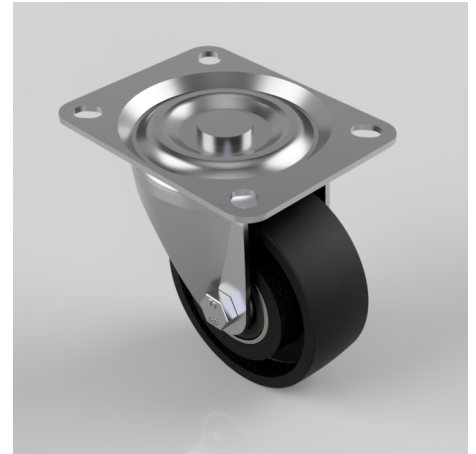


## Cast Iron Plate Swivel Castor 100mm 250kg Load

**Product code: BZH100CIBJLP**

Pressed steel swivel castor with a top plate fixing fitted with a solid cast iron wheel with ball bearings. Wheel diameter 100mm, tread width 38mm, overall height 127mm, top plate 128mm x 102mm, hole centres 105mm x 80mm or 100mm x 76mm. Load capacity 250kg.



Diameter (mm)	100
Castor Type	Swivel
Fixing Option	Plate
Height (mm)	127
Wheel Material	Cast Iron
Colour / Shore Hardness	Black Painted Cast Iron
Temperature Resistance	-30 °C TO +80 °C
Bearing Type	Ball
Load Capacity (kg)	250
Tread (mm)	38
Swivel Radius (mm)	77
Plate Size (mm)	128 x 102
Hole Centres (mm)	105/100 x 80/76
Top Plate Thickness (mm)	3
Fork Thickness (mm)	3
To Suit Fixing Bolt (mm)	10

## BIL GROUP LTD

Porte Marsh Road, Calne, Wiltshire, SN11 9BW

Registered in England No: 2603821

VAT Reg: GB572705729

