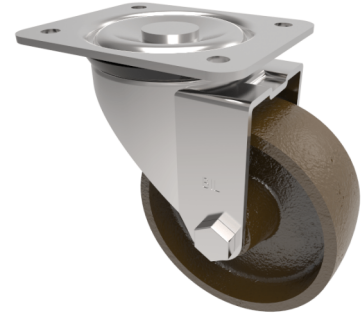


## Cast Iron Plate Swivel Castor 100mm 300kg Load

**Product code: BZEH100CI**



Pressed steel swivel castor with a top plate fixing fitted with a cast iron wheel with a plain bore. Wheel diameter 100mm, tread width 38mm, overall height 128mm, top plate 105mm x 86mm, hole centres 80mm x 60mm. Load capacity 300kg Not high temperature

Diameter (mm)	100
Castor Type	Swivel
Fixing Option	Plate
Height (mm)	128
Wheel Material	Cast Iron
Colour / Shore Hardness	Black Painted Cast Iron
Temperature Resistance	-30 °C TO +80 °C
Bearing Type	Plain
Load Capacity (kg)	250
Tread (mm)	38
Swivel Radius (mm)	90
Plate Size (mm)	105 x 86
Hole Centres (mm)	80 X 60
Top Plate Thickness (mm)	3
Fork Thickness (mm)	3
To Suit Fixing Bolt (mm)	8