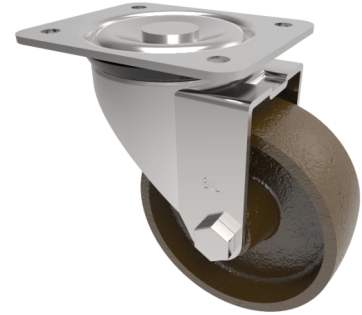


Cast Iron Plate Swivel Castor 100mm 300kg Load

Product code: BZEH100CILP



Pressed steel swivel castor with a top plate fixing fitted with a cast iron wheel with a Plain Bore. Wheel diameter 100mm, tread width 38mm, overall height 128mm, top plate 135mm x 110mm, hole centres 116/105mm x 80/63.5mm. Load capacity 300kg.

Diameter (mm)	100
Castor Type	Swivel
Fixing Option	Plate
Height (mm)	128
Wheel Material	Cast Iron
Colour / Shore Hardness	Black Painted Cast Iron
Temperature Resistance	-30 °C TO +80 °C
Bearing Type	Plain
Load Capacity (kg)	250
Tread (mm)	38
Swivel Radius (mm)	90
Plate Size (mm)	135 x 110
Hole Centres (mm)	105/116 x 80/64
Top Plate Thickness (mm)	3
Fork Thickness (mm)	3
To Suit Fixing Bolt (mm)	10

BIL GROUP LTD

Porte Marsh Road, Calne, Wiltshire, SN11 9BW

Registered in England No: 2603821

VAT Reg: GB572705729

