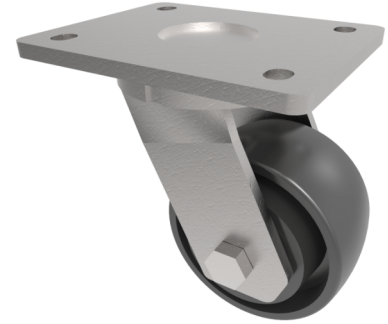


## Cast Iron Plate Swivel Castor 100mm 400kg Load

**Product code: BZMJ100CIBJ**



Fabricated white zinc ROHS plated swivel castor with a top plate fixing fitted with a cast iron wheel with ball bearings. Wheel diameter 100mm, tread width 50mm, overall height 143mm, plate size 138mm x 110mm, hole centres 105mm x 80mm/75mm. Load capacity 400kgs.

Diameter (mm)	100
Fixing Option	Plate
Castor Type	Swivel
Bearing Type	Ball
Height (mm)	143
Plate Size (mm)	138 x 110
Hole Centres (mm)	105 x 80/75
To Suit Fixing Bolt (mm)	10
Wheel Material	Cast Iron
Colour / Shore Hardness	Black Painted Cast Iron
Temperature Resistance	-30 °C TO +80 °C
Top Plate Thickness (mm)	7
Fork Thickness (mm)	6
Swivel Radius (mm)	85
Load Capacity (kg)	400
Tread (mm)	50

### BIL GROUP LTD

Porte Marsh Road, Calne, Wiltshire, SN11 9BW

Registered in England No: 2603821

VAT Reg: GB572705729

