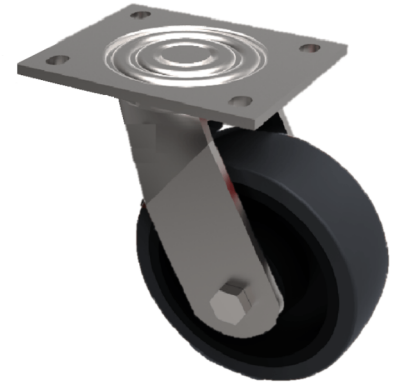


Cast Iron Plate Swivel Castor 125mm 400kg Load

Product code: BZJ125CI



Fabricated swivel castor with a top plate fixing fitted with a black cast iron wheel with a plain bearing. Wheel diameter 125mm, tread width 50mm, overall height 165mm, top plate 135mm x 110mm, hole centres 105mm x 80mm. Load capacity 400kg.

Diameter (mm)	125
Fixing Option	Plate
Castor Type	Swivel
Bearing Type	Plain
Height (mm)	165
Plate Size (mm)	135 x 110
Hole Centres (mm)	105 x 80
To Suit Fixing Bolt (mm)	10
Wheel Material	Cast Iron
Colour / Shore Hardness	Black Painted Cast Iron
Temperature Resistance	-30 °C TO +80 °C
Top Plate Thickness (mm)	5.5
Fork Thickness (mm)	5.5
Swivel Radius (mm)	103
Load Capacity (kg)	400
Tread (mm)	50

BIL GROUP LTD

Porte Marsh Road, Calne, Wiltshire, SN11 9BW

Registered in England No: 2603821

VAT Reg: GB572705729

