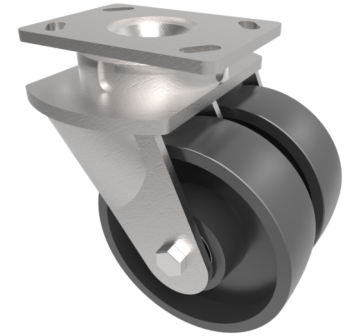


Cast Iron Plate Swivel Castor 150mm 1500kg Load

Product code: 2BZK150CI



Twin wheeled fabricated swivel castor with a top plate fixing fitted with 2 solid cast iron wheels with a plain bore. Wheel diameter 2 x 150mm, tread width 2 x 50mm, overall height 200mm, top plate 150mm x 110mm, hole centres 105mm x 80mm or 121mm x 59mm. Load capacity 1500kg.

Diameter (mm)	150
Fixing Option	Plate
Castor Type	Swivel
Bearing Type	Plain
Plate Size (mm)	150 x 110
Hole Centres (mm)	105/121 x 80/59
Height (mm)	200
Swivel Radius (mm)	144
To Suit Fixing Bolt (mm)	12
Wheel Material	Cast Iron
Colour / Shore Hardness	Black Painted Cast Iron
Temperature Resistance	"-30 °C TO +80 °C
Tread (mm)	2 x 50
Load Capacity (kg)	1500
Top Plate Thickness (mm)	7.5
Fork Thickness (mm)	6

BIL GROUP LTD

Porte Marsh Road, Calne, Wiltshire, SN11 9BW

Registered in England No: 2603821

VAT Reg: GB572705729

