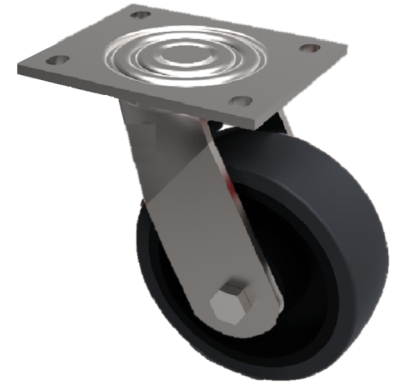


## Cast Iron Plate Swivel Castor 150mm 500kg Load

**Product code: BZEJ150CIBJ**



Fabricated swivel castor with top plate fixing fitted with a cast iron wheel with ball bore. Wheel diameter 150mm, tread width 50mm, overall height 190mm plate size 135mm x 110mm, hole centers 105mm x 80mm. Load capacity 500kg.

Diameter (mm)	150
Fixing Option	Plate
Castor Type	Swivel
Bearing Type	Ball
Height (mm)	190
Plate Size (mm)	135 x 110
Hole Centres (mm)	105 x 80
To Suit Fixing Bolt (mm)	12
Wheel Material	Cast Iron
Colour / Shore Hardness	Black Painted Cast Iron
Temperature Resistance	-30 °C TO +80 °C
Top Plate Thickness (mm)	5.5
Fork Thickness (mm)	5.5
Swivel Radius (mm)	122
Load Capacity (kg)	500
Tread (mm)	50