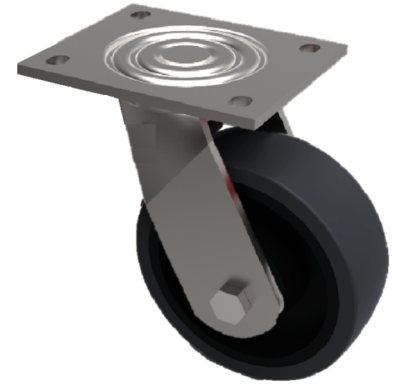


Cast Iron Plate Swivel Castor 150mm 600kg Load

Product code: BZJ150CI

Fabricated swivel castor with a top plate fixing fitted with a cast iron wheel with a plain bearing. Wheel diameter 150mm, tread width 50mm, overall height 190mm, top plate 138mm x 110mm, hole centres 105mm x 80mm. Load capacity 600kg.



Diameter (mm)	150
Fixing Option	Plate
Castor Type	Swivel
Bearing Type	Plain
Height (mm)	190
Plate Size (mm)	135 x 110
Hole Centres (mm)	105 x 80
To Suit Fixing Bolt (mm)	10
Wheel Material	Cast Iron
Colour / Shore Hardness	Black Painted Cast Iron
Temperature Resistance	-30 °C TO +80 °C
Top Plate Thickness (mm)	5.5
Fork Thickness (mm)	5.5
Swivel Radius (mm)	126
Load Capacity (kg)	600
Tread (mm)	50

BIL GROUP LTD

Porte Marsh Road, Calne, Wiltshire, SN11 9BW

Registered in England No: 2603821

VAT Reg: GB572705729

