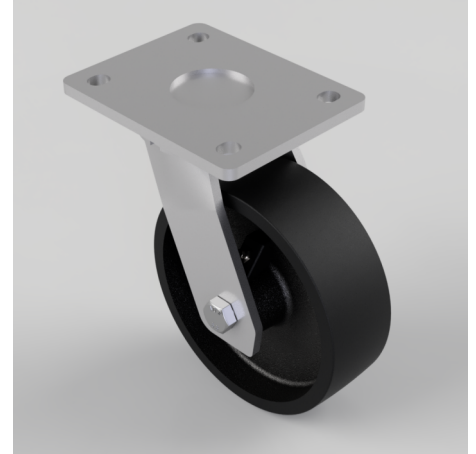


Cast Iron Plate Swivel Castor 150mm 600kg Load

Product code: BZMJ150CI

Fabricated white zinc ROHS plated swivel castor with a top plate fixing fitted with a cast iron wheel with a plain bearing. Wheel diameter 150mm, tread width 50mm, overall height 190mm, top plate 138mm x 105mm, hole centres 105mm x 80/75mm. Load capacity 600kg.



Diameter (mm)	150
Fixing Option	Plate
Castor Type	Swivel
Bearing Type	Plain
Height (mm)	190
Plate Size (mm)	138 x 110
Hole Centres (mm)	105 x 80/75
To Suit Fixing Bolt (mm)	10
Wheel Material	Cast Iron
Colour / Shore Hardness	Black Painted Cast Iron
Temperature Resistance	-30 °C TO +80 °C
Top Plate Thickness (mm)	7
Fork Thickness (mm)	6
Swivel Radius (mm)	120
Load Capacity (kg)	600
Tread (mm)	50

BIL GROUP LTD

Porte Marsh Road, Calne, Wiltshire, SN11 9BW

Registered in England No: 2603821

VAT Reg: GB572705729

