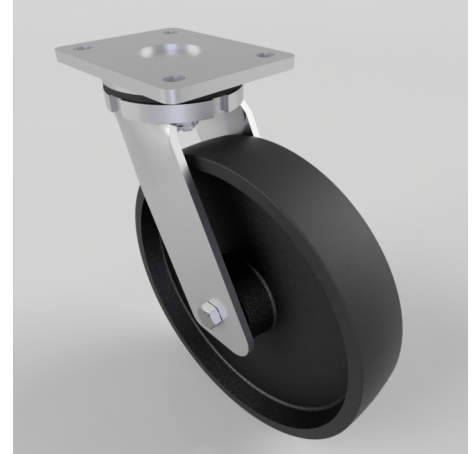


Cast Iron Plate Swivel Castor 250mm 1250kg Load

Product code: BZSAB250CIBJ

Fabricated zinc plated swivel castor with plate fixing fitted with a cast iron wheel centred wheel with ball bearings. Wheel diameter 250mm, tread width 50mm, overall height 300mm, plate size 138mm x 110mm, hole centres 105mm x 80mm. Load capacity 1250kg.



Diameter (mm)	250
Fixing Option	Plate
Castor Type	Swivel
Bearing Type	Ball
Height (mm)	300
Plate Size (mm)	138 x 110
Hole Centres (mm)	105 x 80
To Suit Fixing Bolt (mm)	10
Wheel Material	Cast Iron
Colour / Shore Hardness	Black Painted Cast Iron
Temperature Resistance	-30 °C TO +80 °C
Top Plate Thickness (mm)	8
Fork Thickness (mm)	6
Swivel Radius (mm)	200
Load Capacity (kg)	1250
Tread (mm)	50

BIL GROUP LTD

Porte Marsh Road, Calne, Wiltshire, SN11 9BW

Registered in England No: 2603821

VAT Reg: GB572705729

