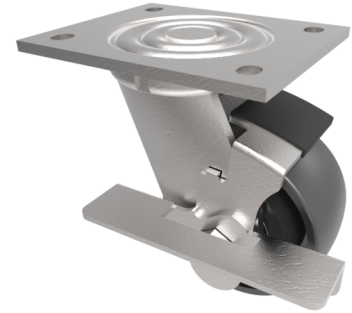


Cast Iron Plate Swivel Castor Brake 100mm 400kg Load

Product code: BZEJ100CIBK

Fabricated swivel castor with a top plate fixing fitted with a black cast iron wheel with a plain bearing and side fitting brake. Wheel diameter 100mm, tread width 50mm, overall height 142mm, top plate 135mm x 110mm, hole centres 105mm x 80mm. Load capacity 400kg.



Diameter (mm)	100
Fixing Option	Plate
Castor Type	Swivel with Wheel Brake
Bearing Type	Plain
Height (mm)	142
Plate Size (mm)	135 x 110
Hole Centres (mm)	105 x 80
To Suit Fixing Bolt (mm)	12
Wheel Material	Cast Iron
Colour / Shore Hardness	Black Painted Cast Iron
Temperature Resistance	-30 °C TO +80 °C
Top Plate Thickness (mm)	5.5
Fork Thickness (mm)	5.5
Swivel Radius (mm)	122
Load Capacity (kg)	400
Tread (mm)	50