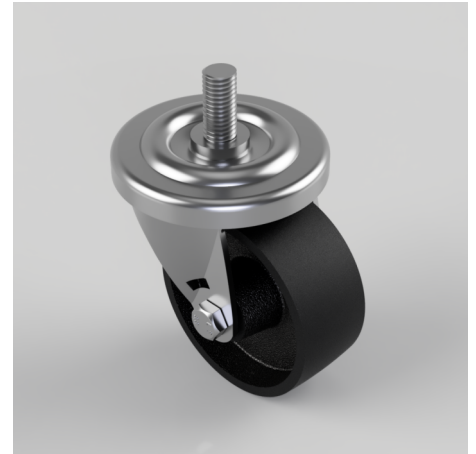


Cast Iron Stem Swivel Castor 75mm 100kg Load

Product code: BZH75CIST

Pressed steel swivel castor with a m12 x 25mm threaded stem fitted with a black cast iron with a plain bore. Wheel diameter 75mm, tread width 32mm, overall height 95mm, Load capacity 125kg.



Diameter (mm)	75
Castor Type	Swivel
Fixing Option	Stem
Height (mm)	95
Wheel Material	Cast Iron
Colour / Shore Hardness	Black Painted Cast Iron
Temperature Resistance	-30 °C TO +80 °C
Bearing Type	Plain
Load Capacity (kg)	125
Tread (mm)	32
Swivel Radius (mm)	58
Head Dia (mm)	78
To Suit Fixing Bolt (mm)	M12 X 25