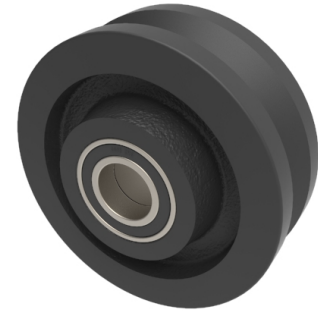


Cast Iron V-Groove 125mm Ball Bearing Wheel 675kg Load

Product code: BZH125WCVBJM254



V-Grooved cast iron wheel with ball bearings. Wheel diameter 125mm, tread width 45mm, bore size 25.4mm. width of groove 22mm, depth of groove 11mm, hub 60mm. Load capacity 675kg.

Diameter (mm)	125
Bearing Type	Ball
Bore Size (mm)	25.4
Colour / Shore Hardness	Black Painted Cast Iron
Wheel Material	Cast Iron
Tread (mm)	45
Hub Width (mm)	60
Temperature Resistance	-30 °C TO +80 °C
Load Capacity (kg)	675
Groove Depth (mm)	11
Groove Width (mm)	22

BIL GROUP LTD

Porte Marsh Road, Calne, Wiltshire, SN11 9BW

Registered in England No: 2603821

VAT Reg: GB572705729

