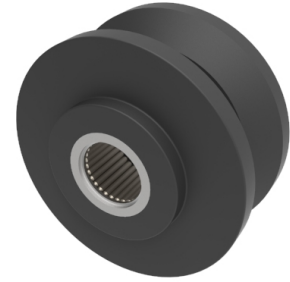


## Cast Iron V-Groove 75mm 19mm Bore Roller Bearing Wheel 200kg Load

**Product code: BZH75WCVRB19**



V-grooved solid cast iron wheel with a roller bearing. Wheel diameter 75mm, tread width 35mm, bore size 19mm, width of groove 22mm, depth of groove 11mm, hub length 45mm. Load capacity 200kg. (Catalogue SKU BZH75WCVRBM191)

Diameter (mm)	75
Bearing Type	Roller
Bore Size (mm)	19.1
Colour / Shore Hardness	Black Painted Cast Iron
Wheel Material	Cast Iron
Tread (mm)	35
Hub Width (mm)	45
Temperature Resistance	-30 °C TO +80 °C
Load Capacity (kg)	200
Groove Depth (mm)	11
Groove Width (mm)	22