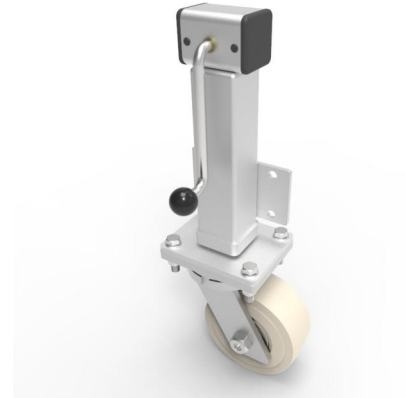


Cast Nylon Plate Swivel Castor 200mm 3000kg Load

Product code: JAZHD200NYBJHD

Cast Nylon Side plate fixing fabricated zinc plated jacking unit fitted with a 200mm swivel castor with a cast nylon ball bearing wheel, Tread width 80mm plate size 200mm x 110mm, hole centres 135mm x 80mm, height 681mm/831mm, maximum lift is 150mm. Load capacity 3000kg. Please note Jacking castors are rated on a different principal to other castors and we recommend the total lifted load is divided over just 2 jacking units. When jacked up to the height please beware of any obstacles as a sudden shock could result in the inner square tube bending around the outer tube. **DO NOT OVERWIND** Handle excessively more than what is needed as this will cause the pin in the gearbox to shear. (This is a safety precaution against over loading the unit)



Diameter (mm)	200
Castor Height (mm)	264
Castor Type	Swivel
Swivel Radius (mm)	165
Fixing Option	Plate
Bearing Type	Ball
To Suit Fixing Bolt (mm)	16
Wheel Material	Nylon
Colour / Shore Hardness	White Nylon
Temperature Resistance	-30 °C TO +80 °C
Load Capacity (kg)	3000
Tread (mm)	80
Height (mm)	681 / 831
Lifting Stroke (mm)	150
Handle Option	Fixed

BIL GROUP LTD

Porte Marsh Road, Calne, Wiltshire, SN11 9BW

Registered in England No: 2603821

VAT Reg: GB572705729

