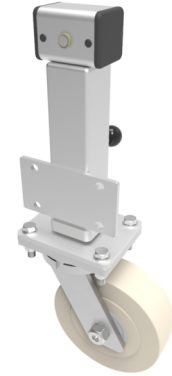


Cast Nylon Plate Swivel Castor 250mm 3000kg Load

Product code: JAZHD250NYBJ



Side plate fixing fabricated zinc plated jacking unit fitted with a 250mm swivel castor with a polyurethane on cast iron centred ball bearing wheel, Tread width 80mm plate size 200mmmm x 110mm, hole centres 135mm x 80mm, height 731mm/881mm, maximum lift is 150mmmm. Load capacity 3000kg. Please note Jacking castors are rated on a different principal to other castors and we recommend the total lifted load is divided over just 2 jacking units. for other dimensions please refer to the BIL catalogue or request a drawing. When jacked up to the height please beware of any obstacles as a sudden shock could result in the inner square tube bending around the outer tube. **DO NOT OVERWIND** Handle excessively more than what is needed as this will cause the pin in the gearbox to shear. (This is a safety precaution against over loading the unit) (Catalogue SK:JAZHD250NYBJHD)

| | |
|--------------------------|------------------|
| Diameter (mm) | 250 |
| Castor Height (mm) | 314 |
| Castor Type | Swivel |
| Swivel Radius (mm) | 203 |
| Fixing Option | Plate |
| Bearing Type | Ball |
| To Suit Fixing Bolt (mm) | 16 |
| Wheel Material | Nylon |
| Colour / Shore Hardness | White Nylon |
| Temperature Resistance | -30 °C TO +80 °C |
| Load Capacity (kg) | 3000 |
| Tread (mm) | 80 |
| Height (mm) | 731 / 881 |
| Lifting Stroke (mm) | 150 |
| Handle Option | Fixed |

BIL GROUP LTD

Porte Marsh Road, Calne, Wiltshire, SN11 9BW

Registered in England No: 2603821

VAT Reg: GB572705729

