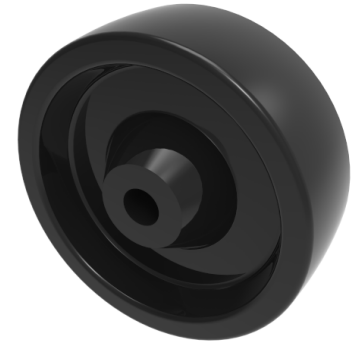


Ditherm 100mm Ball Bearing Wheel 200kg Load

Product code: WAN100BJM12/300



300oC Black Ditherm wheel with a ball bearing. Diameter 100mm, tread width 35mm, bore size 12mm, hub length 40mm. Load capacity 200kg. Max temp 300oC. REACH compliant, RoHs Compliant, USDA approved FDA approved.

| | |
|-------------------------|--|
| Diameter (mm) | 100 |
| Load Capacity (kg) | 200 |
| Wheel Material | Ditherm |
| Bearing Type | Ball |
| Tread (mm) | 35 |
| Hub Width (mm) | 40 |
| Bore Size (mm) | 12 |
| Colour / Shore Hardness | Black High Temperature Ditherm Thermoplastic |
| Temperature Resistance | -40 °C to +300 °C |

BIL GROUP LTD

Porte Marsh Road, Calne, Wiltshire, SN11 9BW

Registered in England No: 2603821

VAT Reg: GB572705729

