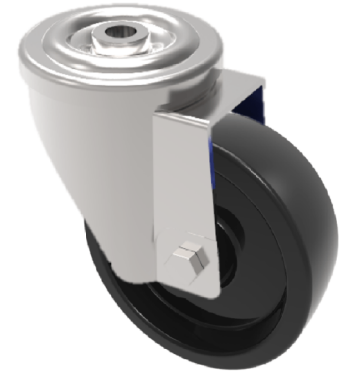


Ditherm Bolt Hole Swivel Castor 100mm 160kg Load

Product code: SSXM100LAN3BH12T

Stainless steel grade 304 swivel castor with a 12mm bolt hole fitted with a black Ditherm wheel with a PTFE bush. Wheel diameter 100mm, tread width 35mm, overall height 130mm. Load capacity 160kg at a maximum temperature of 300c. REACH compliant, RoHs Compliant, USDA approved FDA approved.



| | |
|--------------------------|--------------------------------|
| Diameter (mm) | 100 |
| Fixing Option | Bolt Hole |
| Castor Type | Swivel |
| Head Dia (mm) | 78 |
| To Suit Fixing Bolt (mm) | 12 |
| Height (mm) | 128 |
| Bearing Type | Plain |
| Swivel Radius (mm) | 92 |
| Wheel Material | Ditherm |
| Colour / Shore Hardness | Black High Temperature Ditherm |
| Temperature Resistance | -40 °C to +300 °C |
| Load Capacity (kg) | 180 |
| Tread (mm) | 35 |
| Fork Thickness (mm) | 2.5 |

BIL GROUP LTD

Porte Marsh Road, Calne, Wiltshire, SN11 9BW

Registered in England No: 2603821

VAT Reg: GB572705729

