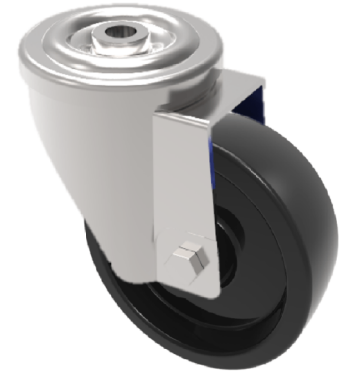


## Ditherm Bolt Hole Swivel Castor 100mm 180kg Load

**Product code: SSXM100AN3TFBH12**

Stainless steel grade 304 swivel castor with a 12mm bolt hole fitted with a black Ditherm wheel with a PTFE bush. Wheel diameter 100mm, tread width 35mm, overall height 130mm. Load capacity 180kg at a maximum temperature of 300c. REACH compliant, RoHs Compliant, USDA approved FDA approved.



Diameter (mm)	100
Fixing Option	Bolt Hole
Castor Type	Swivel
Head Dia (mm)	78
To Suit Fixing Bolt (mm)	12
Height (mm)	128
Bearing Type	PTFE Bush
Swivel Radius (mm)	92
Wheel Material	Ditherm
Colour / Shore Hardness	Black High Temperature Ditherm
Temperature Resistance	-40 °C to +300 °C
Load Capacity (kg)	200
Tread (mm)	35
Fork Thickness (mm)	2.5

### BIL GROUP LTD

Porte Marsh Road, Calne, Wiltshire, SN11 9BW

Registered in England No: 2603821

VAT Reg: GB572705729

