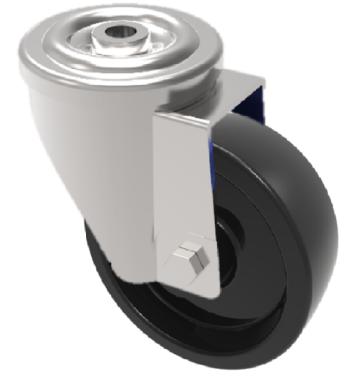


Ditherm Bolt Hole Swivel Castor 100mm 180kg Load

Product code: SSMH100LAN3BH12

Stainless steel Grade 304 swivel castor with a 12mm bolt hole fitted with a black Ditherm wheel with a plain bearing. Wheel diameter 100mm, tread width 35mm, overall height 133mm. Load capacity 180kg at a maximum 280c. REACH compliant, RoHs Compliant, USDA approved FDA approved.



Diameter (mm)	100
Fixing Option	Bolt Hole
Castor Type	Swivel
Head Dia (mm)	78
To Suit Fixing Bolt (mm)	12
Height (mm)	128
Bearing Type	Plain
Swivel Radius (mm)	92
Wheel Material	Ditherm
Colour / Shore Hardness	Black High Temperature Ditherm
Temperature Resistance	-40 °C to +300 °C
Load Capacity (kg)	180
Tread (mm)	35
Fork Thickness (mm)	2.5

BIL GROUP LTD

Porte Marsh Road, Calne, Wiltshire, SN11 9BW

Registered in England No: 2603821

VAT Reg: GB572705729

