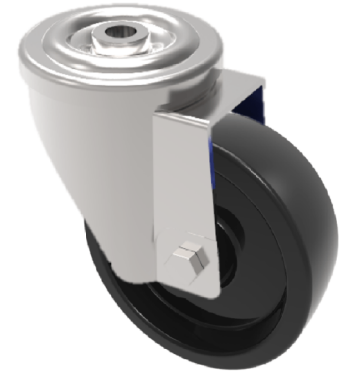


Ditherm Bolt Hole Swivel Castor 125mm 230kg Load

Product code: SSMH125AN3BH12

Grade 304 Stainless steel swivel castor with a 12mm bolt hole fitted with a black Ditherm wheel with plain bore. Wheel diameter 125mm, tread width 40mm, overall height 158mm, Load capacity 230kg at a maximum temperature of 300°C. REACH compliant, RoHs Compliant, USDA approved FDA approved.



Diameter (mm)	125
Fixing Option	Bolt Hole
Castor Type	Swivel
Head Dia (mm)	78
To Suit Fixing Bolt (mm)	12
Height (mm)	158
Bearing Type	Plain
Swivel Radius (mm)	107
Wheel Material	Ditherm
Colour / Shore Hardness	Black High Temperature Ditherm
Temperature Resistance	-40 °C to +300 °C
Load Capacity (kg)	230
Tread (mm)	40
Fork Thickness (mm)	2.5

BIL GROUP LTD

Porte Marsh Road, Calne, Wiltshire, SN11 9BW

Registered in England No: 2603821

VAT Reg: GB572705729

