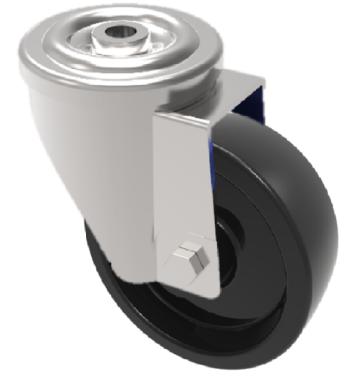


Ditherm Bolt Hole Swivel Castor 80mm 180kg Load

Product code: SSMH80AN3BH12TF

Grade 304 Stainless steel swivel castor with 12mm bolt hole fitted with a black Ditherm wheel with PTFE bushes. Wheel diameter 80mm, tread width 35mm, overall height 113mm, Load capacity 180kg at a maximum temperature of 300c. REACH compliant, RoHs Compliant, USDA approved FDA approved. (Catalogue SKU SSMH80AN3TFBH12)



Diameter (mm)	80
Fixing Option	Bolt Hole
Castor Type	Swivel
Head Dia (mm)	78
To Suit Fixing Bolt (mm)	12
Height (mm)	108
Bearing Type	PTFE Bush
Swivel Radius (mm)	78
Wheel Material	Ditherm
Colour / Shore Hardness	Black High Temperature Ditherm
Temperature Resistance	-40 °C to +300 °C
Load Capacity (kg)	150
Tread (mm)	35
Fork Thickness (mm)	2.5

BIL GROUP LTD

Porte Marsh Road, Calne, Wiltshire, SN11 9BW

Registered in England No: 2603821

VAT Reg: GB572705729

