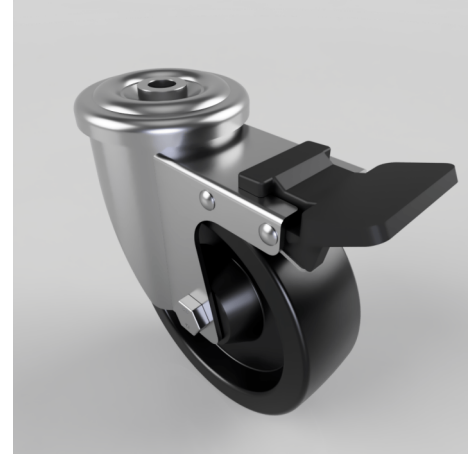


## Ditherm Bolt Hole Swivel Castor Brake 125mm 230kg Load

**Product code: BZMH125AN3BH12TFSWB**

Pressed steel swivel castor with a 12mm bolt hole fixing fitted with a black Ditherm wheel with PTFE sleeve and total lock brake. Wheel diameter 125mm, tread width 40mm, overall height 158mm. Load capacity 230kg with a maximum temperature of 280c.. REACH compliant, RoHs Compliant, USDA approved FDA approved. (Catalogue SKU BZMH125AN3TFBH12SWB)



Diameter (mm)	125
Fixing Option	Bolt Hole
Castor Type	Swivel with Total Lock Brake
Head Dia (mm)	78
To Suit Fixing Bolt (mm)	12
Height (mm)	158
Bearing Type	PTFE Bush
Swivel Radius (mm)	125
Wheel Material	Ditherm
Colour / Shore Hardness	Black High Temperature Ditherm
Temperature Resistance	-40 °C to +280 °C
Load Capacity (kg)	230
Tread (mm)	40
Fork Thickness (mm)	2.5

### BIL GROUP LTD

Porte Marsh Road, Calne, Wiltshire, SN11 9BW

Registered in England No: 2603821

VAT Reg: GB572705729

