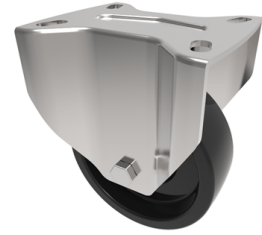


Ditherm Plate Fixed Castor 100mm 180kg Load

Product code: BZMMF100LAN3TF



Pressed steel fixed castor with a top plate fixing fitted with a black Ditherm wheel with PTFE bushes. Wheel diameter 100mm, tread width 35mm, overall height 128mm, top plate 100mm x 85mm, hole centres 80mm x 60mm. Load capacity 180kg. REACH compliant, RoHs Compliant, USDA approved FDA approved.

Diameter (mm)	100
Fixing Option	Plate
Castor Type	Fixed
Plate Size (mm)	105 X 85
Hole Centres (mm)	80 X 60
To Suit Fixing Bolt (mm)	8
Height (mm)	128
Bearing Type	PTFE Bush
Wheel Material	Ditherm
Colour / Shore Hardness	Black High Temperature Ditherm
Temperature Resistance	-40 °C to +300 °C
Load Capacity (kg)	180
Tread (mm)	35
Top Plate Thickness (mm)	2
Fork Thickness (mm)	2