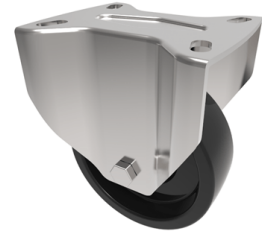


Ditherm Plate Fixed Castor 100mm 180kg Load

Product code: BZMMF100LANBJ3



Pressed steel fixed castor with top plate fixing fitted with a 300c Black Ditherm ball bearing wheel, Wheel diameter 100mm, tread width 30mm, overall height 128 mm, plate size 105mm x 85mm, hole centres 80mm x 60mm. Load capacity 170kg at a maximum 300c. REACH compliant, RoHs Compliant, USDA approved FDA approved.

Diameter (mm)	100
Fixing Option	Plate
Castor Type	Fixed
Plate Size (mm)	105 X 85
Hole Centres (mm)	80 X 60
To Suit Fixing Bolt (mm)	8
Height (mm)	128
Bearing Type	Ball
Wheel Material	Ditherm
Colour / Shore Hardness	Black High Temperature Ditherm
Temperature Resistance	-40 °C to +300 °C
Load Capacity (kg)	180
Tread (mm)	35
Top Plate Thickness (mm)	2
Fork Thickness (mm)	2

BIL GROUP LTD

Porte Marsh Road, Calne, Wiltshire, SN11 9BW

Registered in England No: 2603821

VAT Reg: GB572705729

