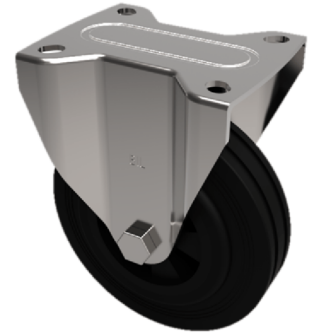


Ditherm Plate Fixed Castor 100mm 200kg Load

Product code: SSMHF100AN3TF



Grade 304 Stainless steel fixed castor with a top plate fixing fitted with a black Ditherm wheel with PTFE bushes. Wheel diameter 100mm, tread width 35mm, overall height 133mm, top plate 100mm x 85mm, hole centres 80mm x 60mm or 75mm x 45mm. Load capacity 200kg at a maximum temperature of 300c. REACH compliant, RoHs Compliant, USDA approved FDA approved.

| | |
|--------------------------|--------------------------------|
| Diameter (mm) | 100 |
| Fixing Option | Plate |
| Castor Type | Fixed |
| Plate Size (mm) | 100 x 85 |
| Hole Centres (mm) | 80/75 x 60/45 |
| To Suit Fixing Bolt (mm) | 8 |
| Height (mm) | 128 |
| Bearing Type | PTFE Bush |
| Wheel Material | Ditherm |
| Colour / Shore Hardness | Black High Temperature Ditherm |
| Temperature Resistance | -40 °C to +300 °C |
| Load Capacity (kg) | 200 |
| Tread (mm) | 35 |
| Top Plate Thickness (mm) | 2.5 |
| Fork Thickness (mm) | 2.5 |

BIL GROUP LTD

Porte Marsh Road, Calne, Wiltshire, SN11 9BW

Registered in England No: 2603821

VAT Reg: GB572705729

