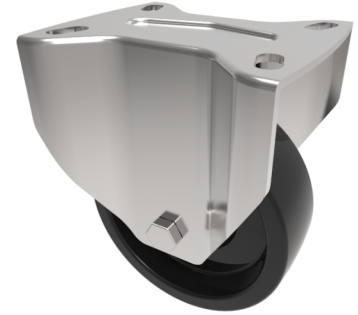


Ditherm Plate Fixed Castor 100mm 200kg Load

Product code: BZXMF100AN3TF



Pressed steel fixed castor with a top plate fixing fitted with a 300oc Ditherm wheel with PTFE bushes. Wheel diameter 100mm, tread width 35mm, overall height 128mm, top plate 100mm x 85mm, hole centres 80mm x 60mm. Load capacity 200kg. REACH compliant, RoHs Compliant, USDA approved FDA approved.

Diameter (mm)	100
Fixing Option	Plate
Castor Type	Fixed
Plate Size (mm)	100 x 85
Hole Centres (mm)	80/75 x 60/45
To Suit Fixing Bolt (mm)	8
Height (mm)	128
Bearing Type	PTFE Bush
Wheel Material	Ditherm
Colour / Shore Hardness	Black High Temperature Ditherm
Temperature Resistance	-40 °C to +300 °C
Load Capacity (kg)	200
Tread (mm)	35
Top Plate Thickness (mm)	2.5
Fork Thickness (mm)	2.5

BIL GROUP LTD

Porte Marsh Road, Calne, Wiltshire, SN11 9BW

Registered in England No: 2603821

VAT Reg: GB572705729

